

USED EQUIPMENT LISTING

Updated: 3/19/2024

FINANCING AVAILABLE



BRAND: JOHN DEERE
MODEL: Z335E

\$2,999

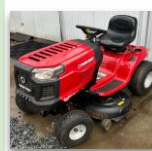
JOHN DEERE 20 HORSEPOWER V-TWIN ENGINE. WITH <35 HOURS ON IT, THIS 42" DECK HAS A PRE-INSTALLED BAGGER TO CATCH CLIPPINGS.



BRAND: BOBCAT
MODEL: 934007J

\$3,999

KAWASAKI FS481V ENGINE. THIS MACHINE HAS <55 HOURS WITH 14.5 HORSEPOWER.



BRAND: TROYBILT
MODEL: BRONCO 42

\$1,299

THIS TRACTOR HAS A 19 HORSEPOWER BRIGGS & STRATTON ENGINE, ALONG WITH AUTO HEADLIGHTS AND LOADS OF COMFORT



BRAND: SNAPPER
MODEL: 7800980

\$499

190cc BRIGGS & STRATTON 21" DECK SELF PROPELLED REAR WHEEL DRIVE UNIQUE BAGGING SYSTEM



BRAND: BOBCAT
MODEL: 942631 XRZ

\$5,500

22 HORSEPOWER KAWASAKI FX691V ENGINE. THIS MOWER HAS A 52" DECK, ALONG WITH <355 HOURS ON THE MOWER



BRAND: TROYBILT
MODEL: TB30R

\$999

10.5 HORSEPOWER BRIGGS & STRATTON ENGINE. THIS MOWER HAS A 30" DECK, ALONG WITH LED HEADLIGHTS



BRAND: BILLY GOAT
MODEL: FM3300

\$599

13 HORSEPOWER BRIGGS & STRATTON ENGINE. THIS MOWER HAS A 30" DECK AND IS A 5 SPEED THAT CAN CUT UP TO 1.25 ACRES AN HOUR



BRAND: SCAG
MODEL: V-RIDE II 36"

\$7,699+

Gently used 36" SCAG V-RIDE II with a FX600V Kawasaki engine. Unit has 145 hours on it as well.



BRAND: JOHN DEERE
MODEL: Z325E 48A

\$3,000

THIS 724cc, 24 HORSEPOWER TWIN POWER ENGINE MOWER HAS <135 HOURS ON IT. THIS 48" MOWER ALSO HAS THE POWER TO MOW UP TO 7 MPH

& MORE! Come and see us!

USED EQUIPMENT LISTING

Updated: 3/19/2024

FINANCING AVAILABLE



BRAND: STIHL
MODEL: FS 56 RC

\$175

THIS 27.2cc, 10.6 LB STIHL WEED EATER IS NEXT TO NEW. THIS MODEL IS AN EASY START WITH REDUCED EMISSION FOR A CLEANER USE



BRAND: ECHO
MODEL: HC152

\$200

21.2cc TWO STROKE ENGINE. THIS HEDGE TRIMMER HAS A 20" DOUBLE SIDED BLADE ALONG WITH A TIP GUARD



BRAND: ECHO
MODEL: SRM-2400

\$75

23.6cc TWO CYCLE ENGINE, 12 LB WEED EATER IS IN GOOD CONDITION AND IS EASY TO USE



BRAND: REDMAX
MODEL: EBZ7500

\$450

THIS REDMAX BLOWER HAS BLOWING SPEEDS OF UP TO 236 MPH WITH A 65.6cc STRATO-CHARGED TWO-STROKE ENGINE



BRAND: STIHL
MODEL: HL 91 K

\$200

THIS 24.1cc ENGINE HEDGE TRIMMER HAS A 24" CUTTING BLADE THAT IS DOUBLE SIDED.



BRAND: STIHL
MODEL: HS 56C

\$214

21.4cc ENGINE. THIS HEDGE TRIMMER HAS A 24" DOUBLE SIDED BLADE. ALONG WITH AN ANTI-VIBRATION SYSTEM.



BRAND: STIHL
MODEL: FSA 57 SET

\$149

BATTERY & CHARGER INCLUDED
GENERAL RUN TIME OF 27Min &
WEIGHS ~9 POUNDS W/ BATTERY

& MORE! Come and see us!